

ROUTE 522
STANDPIPE (T-3)
HIGH WATER LEVEL = 620'
ALTITUDE VALVE SETTING = 613.30'
VOLUME = 1,000,000 GALLONS

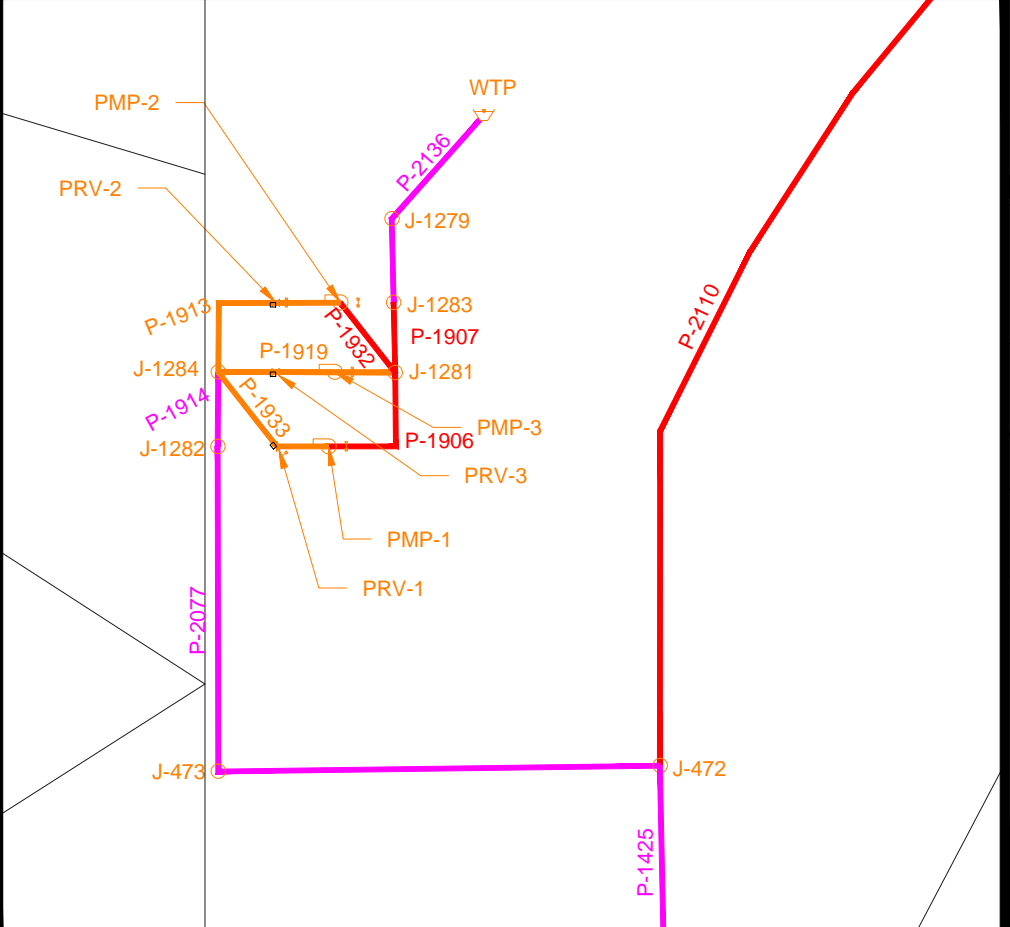
ROUTE 29
ELEVATED STORAGE
TANK (T-1)
HIGH WATER LEVEL = 600'
VOLUME = 300,000 GALLONS

SEE BLOW-UP #1
THIS DWG.

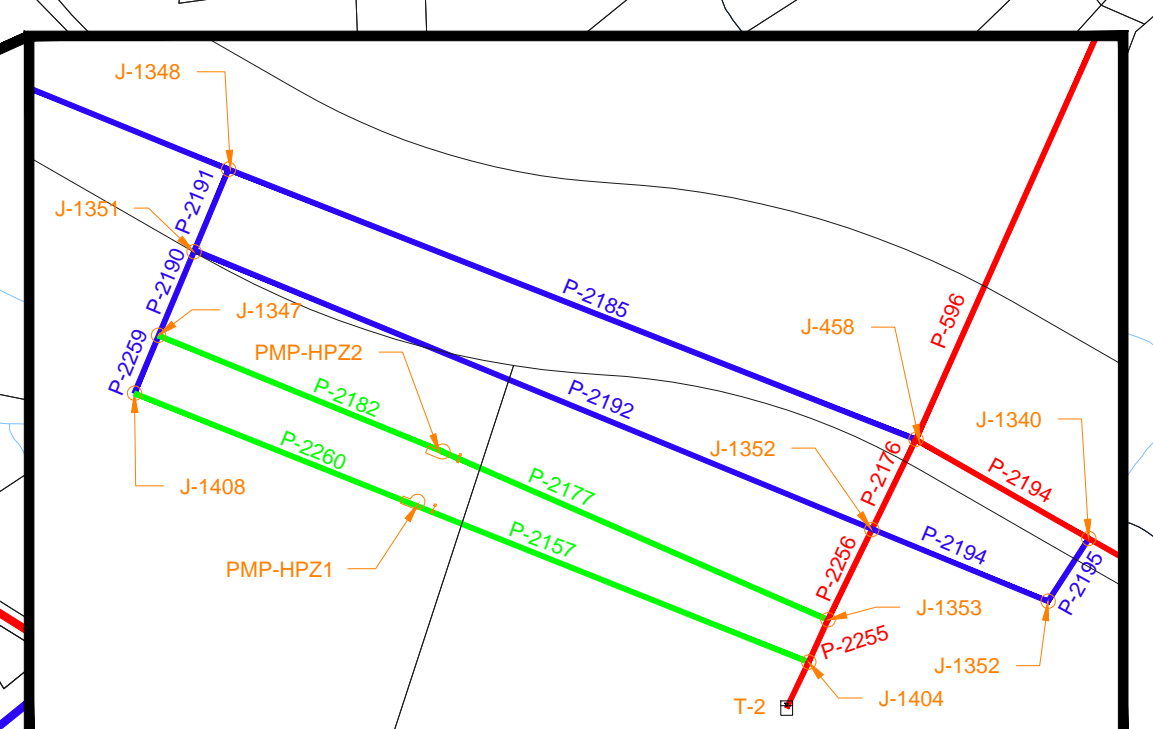
SEE BLOW-UP #2
THIS DWG.

ROUTE 15
STANDPIPE (T-2)
HIGH WATER LEVEL = 606'
ALTITUDE VALVE SETTING = 612.0'
VOLUME = 500,000 GALLONS

HPZ ELEVATED STORAGE
TANK (T-HPZ)
HIGH WATER LEVEL = 689.50'
VOLUME = 800,000 GALLONS



WATER TREATMENT PLANT BLOW-UP #1
SCALE: 1" = 50'



BLOW-UP #2
SCALE: 1" = 50'

LEGEND

- = 1" PIPE
- = 10" PIPE
- = 2" PIPE
- = 12" PIPE
- = 4" PIPE
- = 18" PIPE
- = 6" PIPE
- = STANDPIPE
- = 8" PIPE
- [Blue Tank Symbol] = ELEVATED STORAGE TANK

IF THIS DRAWING IS A REDUCTION GRAPHIC SCALE MUST BE USED
SCALE: 1" = 800'
[Graphic Scale]

IF THIS DRAWING IS A REDUCTION GRAPHIC SCALE MUST BE USED
SCALE: 1" = 50'
[Graphic Scale]

WASSOCIATES
ENGINEERS
SURVEYORS
PLANNERS

1910 Main Street, Suite 200
Lynchburg, VA 24502
Phone: 434.386.6888
www.wassociates.com

DESIGNED BY: JAC
DRAWN BY: WSW
REVIEWED BY: HFW
WVA NUMBER: 217002.07

PROJECT: TOWN OF CULPEPER WATER DISTRIBUTION SYSTEM
TITLE: WATER MODEL
FILE NAME: WATER MODEL
DISCIPLINE: GENERAL
SCALE: H: 1" = 800', V: N/A
DATE: 8/20/18

REVISION SET: —
DRAWING NUMBER: EX-1
SHEET NUMBER: 1 OF 1